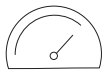


## AICON **SCAN XR-500** **POULTRY APPLICATION**



Ultra Performance X-ray inspection system designed for the quality control of raw meat. Thanks to advanced technology and a Photon Counter Detector (PCD), the device is able to detect even 1mm of calcified bone.



**60 m/min**  
Speed



**10 Gb/s**  
Processing



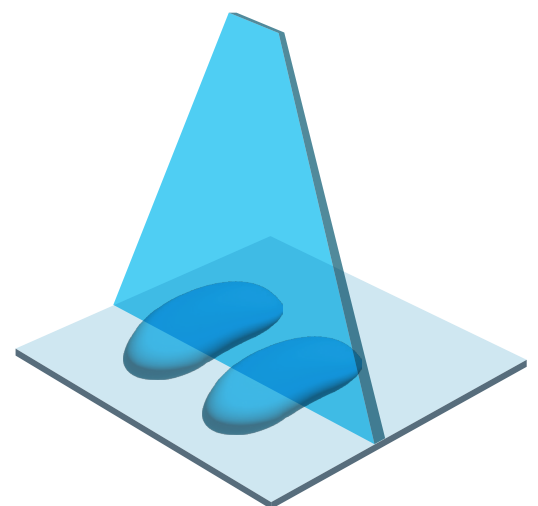
**240 PPM**  
Performance



### **ULTRA** **PERFORMANCE X-RAY** INSPECTION SYSTEM FOR QUALITY CONTROL OF RAW MEAT

## **ADVANTAGES**

- **Effective detection** - the highest detection level (POD) of calcified bones, metallic contamination, glass, stones, Teflon, ceramics, dense plastics, product lumps and more, with the lowest false rejection rate (FRR).
- **Ultra Performance X-ray** - for applications with most demanding performance - state of art configuration with maximum source and detector parameters, control electronics and data calculation parameters, as also unique image analyze algorithms.
- **Heavy Duty Higenic Clean** - construction adapted for harsh and wet production environment.
- **Poultry Bone Detection** - proprietary bone detection application configuration of hardware and software with dedicated algorithms for highest performance of multi-energy imaging and analyze as also re-inspection system to optimized procedure with manual handling/cleaning.
- **Multilane** - the ability to control several production lines at the same time reduced to one X-ray detector.



**Beam geometry**

# TECHNOLOGY

- **High-efficiency, multi-threaded data processing** - the industry's highest multi-threaded data processing speeds - up to 10 Gb/s - for the most efficient image processing and maximum performance of the entire inspection system.
- **Self-control system** - AICON SCAN XR series devices are equipped with advanced built-in self-control system. This system guarantees stable operation of software and hardware, based on dual communication and redundant data processing. Devices built according to this concept perform continuous self-control in order to capture their own malfunctions at all stages of the product scanning process, from image creation to image analysis, through to reject of non-compliant product and the supervision of data acquisition.
- **Inverted inspection logic** - by default, AICON X-Ray devices treat every inspected product as non-compliant and therefore deemed to be rejected. It is only during the scanning process that the system analyses and determines whether the product meets the expected quality requirements, and whether its status can be changed to compliant. This inverted product inspection logic system greatly minimizes the risk of non-compliant products making it to market, even in the event of failure of any component in the inspection system.
- **Advanced tracking system** - comprehensive product flow control is performed in real time, ensuring precise tracking and reliable registration of the position of each product transported - regardless of line throughput or complexity of the production process.

# FEATURES

- **An intelligent, ergonomic design** - ergonomic solutions ensure comfortable operation and allow for easy and quick system adjustment, should you need to replace individual consumable components. Plus, these systems have been designed to the highest standard of hygiene for easy maintenance regardless of manufacturing conditions.
- **Simple and easy to use** - simple and convenient operation, thanks to the highly ergonomic system and automated product learning.
- **Interface personalization** - flexibility to adjust the control panel to suit individual user requirements, allowing for higher operational comfort.
- **Full MES integration** - intelligent integration into the production environment and vast compatibility with current industry standards guarantee seamless communication of the X-ray detection system with key devices in the production line (including EtherNet/IP, PROFINET, S7, EtherCAT, Modbus-TCP, Profibus, CAN, CANopen, OPC UA, SQL, Siemens Standard and RS).

See more  
on our website



## TECHNICAL SPECIFICATION AICON SCAN XR-500 POULTRY APPLICATION

Troughput	≤ 60m/min
Detection area	450mm at belt level
Diode resolution	0,1 mm, PCD (Photon Counter Detector)
X-ray source	35-100 kV / 1.0-8.0 mA, 500 W
Number of scanning beams	1
Beam direction	Vertical
X-ray emission	<1 μSv / h, the product complies with legal EU directives
Cooling	Dry Air or chilled water cooling system
Operating environment	Temperature: 0 - 45 ° C, humidity: 30 - 95%, non-condensing
Ingress Protection	IP69
Construction material	Bead-blasted stainless steel 1.4301 (AISI 304)
Display	TFT LCD 17" Touchscreen
Operating system	Windows 10 Enterprise
Software	AiSoft
Number of product programmes	1000
Disk space	500 GB for x-ray pictures and internal data storage, expandable
Communication interfaces	Ethernet 10/100/1000 mbps, USB 3.0 for external data storage
Air requirement	Min. 6 bar for pneumatic rejection systems
Power supply	Single phase, 230 VAC +/-10%, fuse 16 A
Dimensions	2650 mm x 1415 mm x 2600 mm (L x B x H)

